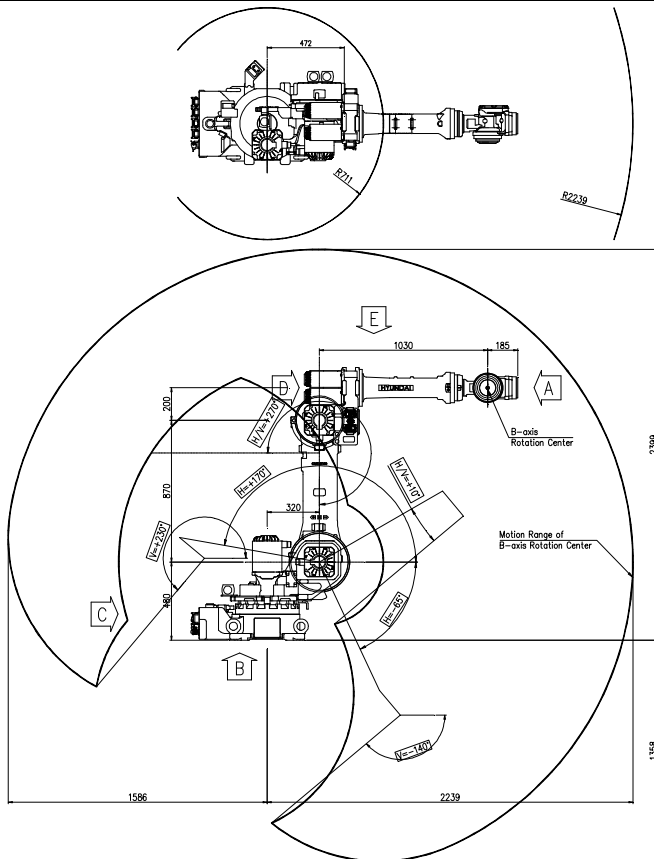


# YS080

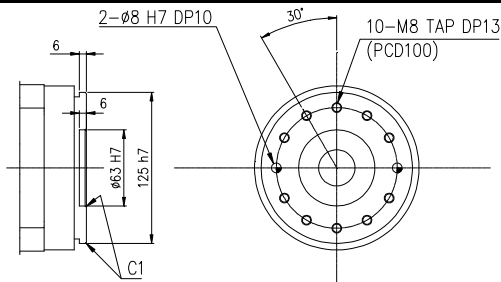
**Payload 80Kgf**

Installation method		Application	
Floor	●	Spot welding	●
Ceiling		Arc welding	
Wall surface		Handling	●
		Assembly	●
		Sealing	
		Painting	

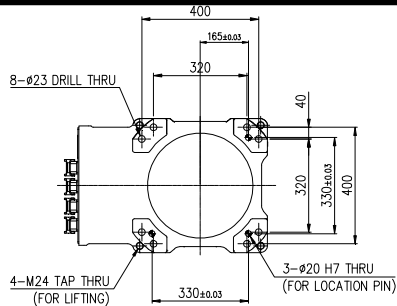


Item		Specification	
Robot model		YS080	
Payload		80 Kg	
Structure		Articulated	
Degree of freedom		6 axes	
Max. working envelope	Arm	S Swivel	$\pm 3.142$ rad ( $\pm 180^\circ$ )
		H Horizontal	$+2.967 \sim -1.134$ rad ( $+170^\circ \sim -65^\circ$ )
		V Vertical	$+3.141 \sim -1.396$ rad ( $+180^\circ \sim -80^\circ$ )
	Wrist	R2 Rotation 2	$\pm 6.283$ rad ( $\pm 360^\circ$ )
		B Bending	$\pm 2.182$ rad ( $\pm 125^\circ$ )
Max. working speed	Arm	S Swivel	2.967 rad / s (170 / s)
		H Horizontal	2.443 rad / s (140 / s)
		V Vertical	2.793 rad / s (160 / s)
	Wrist	R2 Rotation 2	4.014 rad / s (230° / s)
		B Bending	4.014 rad / s (230° / s)
Wrist torque	R2 Rotation 2	400 Nm (40.8 Kgfm)	
	B Bending	400 Nm (40.8 Kgfm)	
	R1 Rotation 1	200 Nm (20.4 Kgfm)	
Accuracy of position repeatability		$\pm 0.15$ mm	
Ambient Temperature		0 ~ 45 °C (273 ~ 318 K)	
Robot's Weight		645 Kg	

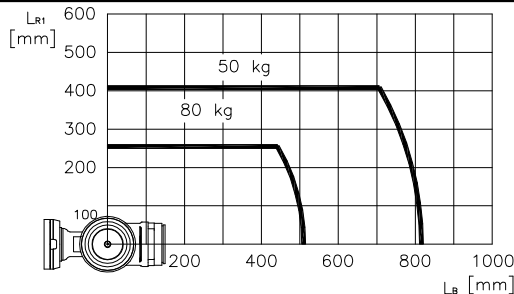
**View A: Detailed drawing of the wrist attachment part**



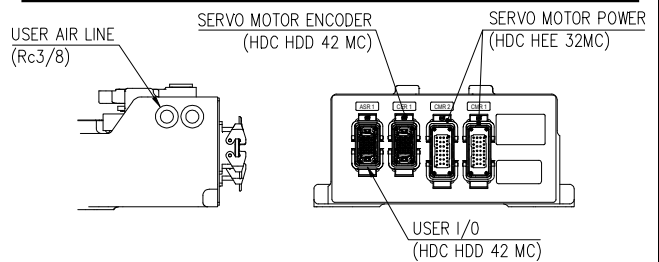
**View B: Dimensional drawing for the floor installation of the body**



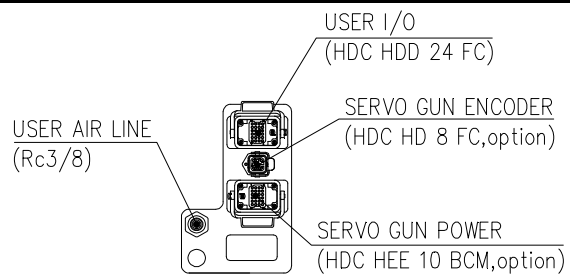
**Wrist-axis torque line diagram**



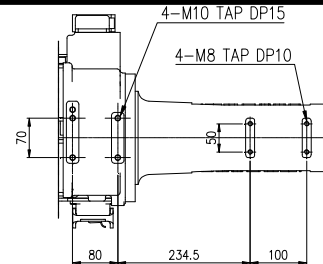
**View C: Application cable connection part**



**View D: Application cable connection part**



**View E: Details of the application ancillary part attachment**



\*\* For product improvement, some of the ratings, specifications, dimensions, etc. are subject to changes without notice.