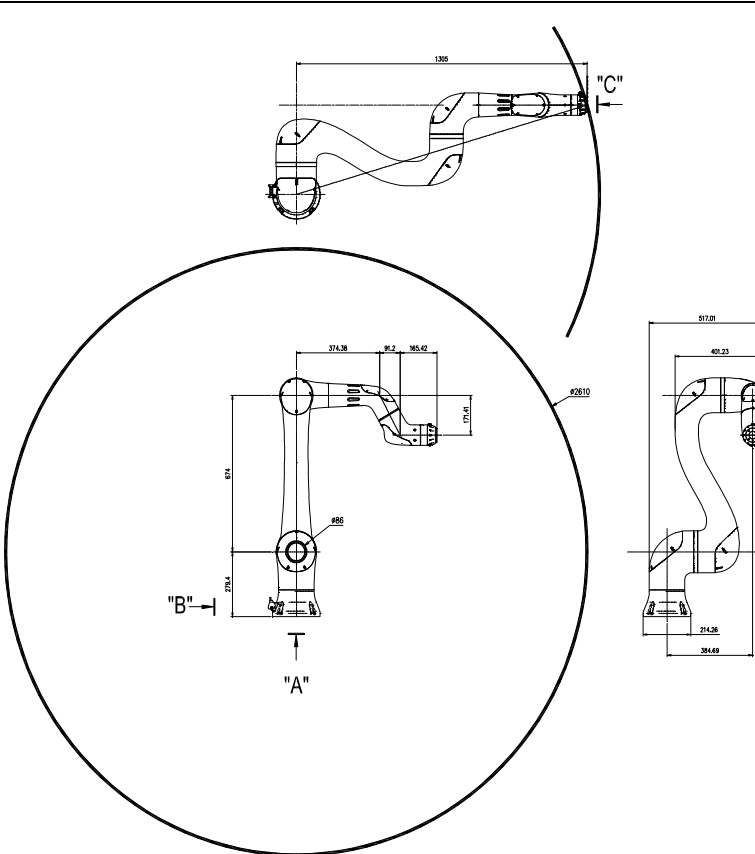


YL012

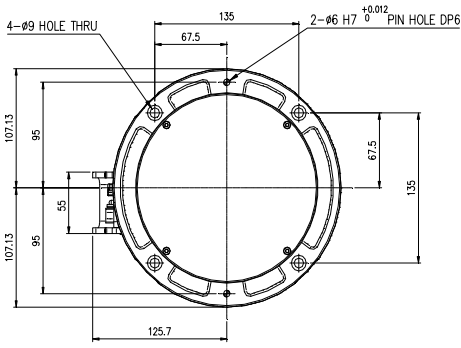
Installation method		Application	
Floor	●	Spot welding	●
Ceiling		Arc welding	●
Wall surface		Handling	●
		Assembly	●
		Sealing	●
		Painting	●



View A: Dimensional drawing for the floor installation of the body

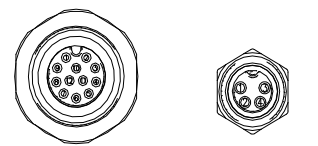
Item		Specification		
Robot model		YL012		
Payload		12 kg		
Structure		Articulated		
Degree of freedom		6 axes		
Drive system		AC SERVO MOTOR		
Max. working envelope	Arm	A	S Swivel	$\pm 3.142 \text{ rad } (\pm 180^\circ)$
		H	Horizontal	$+2.37 \sim -0.79 \text{ rad } (+270^\circ \sim -90^\circ)$
		V	Vertical	$\pm 3.142 \text{ rad } (\pm 180^\circ)$
	Wrist	R2	Rotation 2	$\pm 3.142 \text{ rad } (\pm 180^\circ)$
		B	Bending	$\pm 3.142 \text{ rad } (\pm 180^\circ)$
Max. working speed	Arm	A	S Swivel	$3.142 \text{ rad } (180^\circ/\text{sec})$
		H	Horizontal	$2.182 \text{ rad } (125^\circ/\text{sec})$
		V	Vertical	$3.142 \text{ rad } (180^\circ/\text{sec})$
	Wrist	R2	Rotation 2	$3.142 \text{ rad } (180^\circ/\text{sec})$
		B	Bending	$3.142 \text{ rad } (180^\circ/\text{sec})$
Wrist torque	R1	Rotation 1	$3.142 \text{ rad } (180^\circ/\text{sec})$	
	R2	Rotation 2	49 N.m (5.0 kgf.m)	
	B	Bending	54.9 N.m (5.6 kgf.m)	
Accuracy of position repeatability		$\pm 0.1 \text{ mm}$		
Ambient Temperature		$0 \sim 45^\circ \text{C } (273 \sim 313 \text{ K})$		
Robot's Weight		43 Kg		
Working envelope section area		1305		

*) When the optional limit switch is attached, the action range of the main axis will be limited (see the manual)

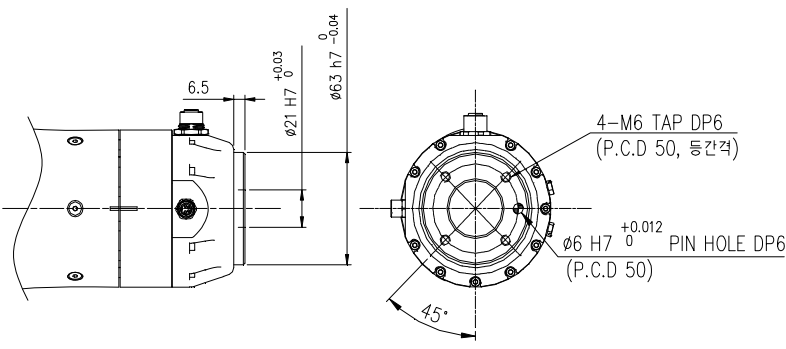


View C: Detailed drawing of the wrist attachment

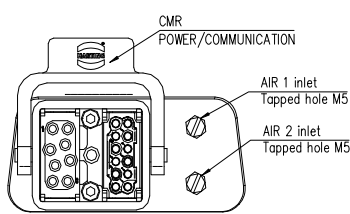
View C: Application cable connection part



CONNECTOR : T417130012-001(TE)				CONNECTOR : T4071017041-001(TE)	
User I/O Port				EtherCAT Port	
Pin No.	Description	Pin No.	Description	Pin No.	Description
1	Digital out CH0	7	Digital in CH2	1	TX +
2	Digital out CH1	8	Digital in CH3	2	TX -
3	Digital out CH2	9	Analog in CH0	3	RX +
4	Digital out CH3	10	Analog in CH1	4	RX -
5	Digital in CH0	11	Voltage out		
6	Digital in CH1	12	GND		



View B: Application cable connection part



** For product improvement, some of the ratings, specifications, dimensions, etc. are subject to changes without notice