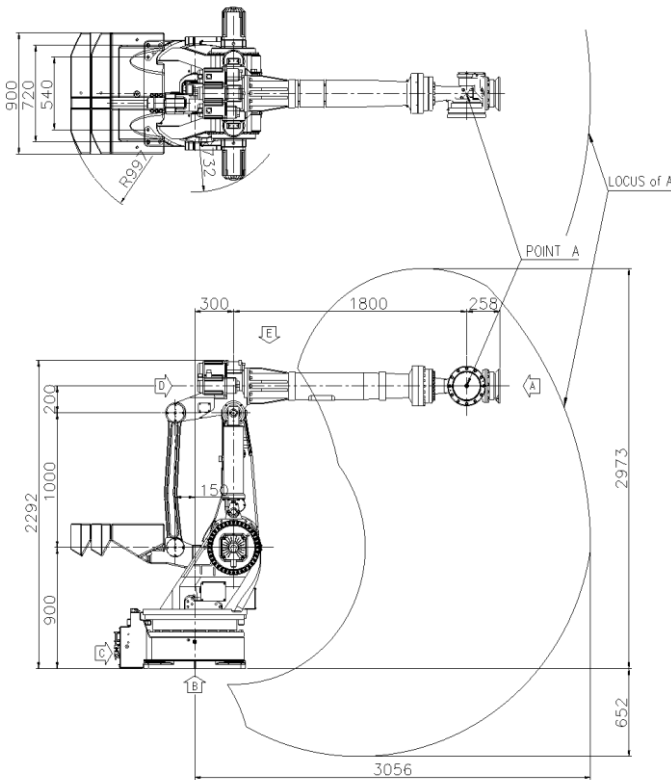


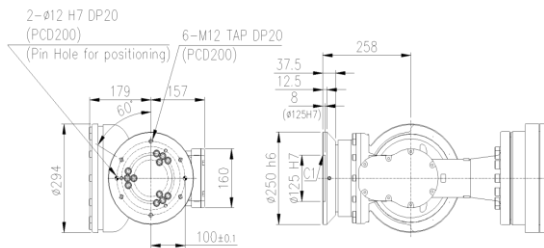
HX400L

Payload 400Kg

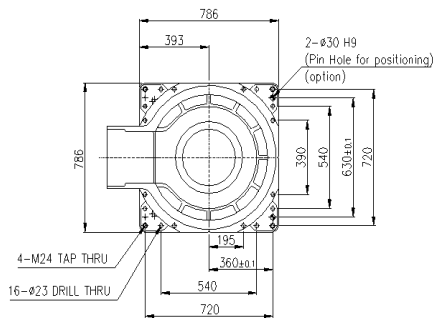
Installation method		Application	
Floor	●	Spot welding	●
Ceiling		Arc welding	●
Wall surface		Handling	●
		Assembly	●
		Sealing	●
		Painting	●



View A: Detailed drawing of the wrist attachment part

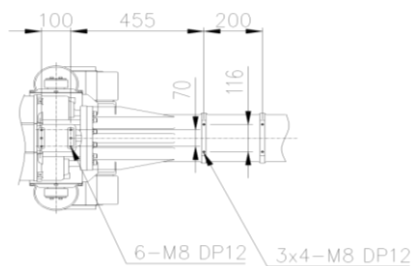


View B: Dimensional drawing for the floor installation of the body



View C: Application cable connection part

View E: Details of the application ancillary part attachment



View D: Application cable connection part

Item		Specification
Robot model		HX400L
Payload		400Kg
Structure		Articulated
Degree of freedom		6 axes
Drive system		AC SERVO MOTOR
Max. working envelope	Arm	S Swivel $\pm 3.142 \text{ rad } (\pm 180^\circ)$
		H Horizontal $+2.88 \sim +0.26 \text{ rad } (+165^\circ \sim +15^\circ)$
		V Vertical $+0.52 \sim -2.18 \text{ rad } (+60^\circ \sim -70^\circ)$
	Wrist	R2 Rotation 2 $\pm 6.283 \text{ rad } (\pm 360^\circ)$
		B Bending $\pm 2.09 \text{ rad } (\pm 120^\circ)$
Max. working speed	Arm	S Swivel 1.48 rad/s (85°/s)
		H Horizontal 1.48 rad/s (85°/s)
		V Vertical 1.48 rad/s (85°/s)
	Wrist	R2 Rotation 2 1.745 rad/s (100°/s)
		B Bending 1.745 rad/s (100°/s)
Wrist torque	R2 Rotation 2 1,960 N-m (200 kgf-m)	
	B Bending 1,960 N-m (200 kgf-m)	
	R1 Rotation 1 823 N-m (84 kgf-m)	
Accuracy of position repeatability		$\pm 0.08 \text{ mm}$
Ambient Temperature		0 ~ 40°C (273 ~ 313K)
Robot's Weight		2,950Kg
Working envelope section area		6.15m ²

** For product improvement, some of the ratings, specifications, dimensions, etc. are subject to changes without notice.