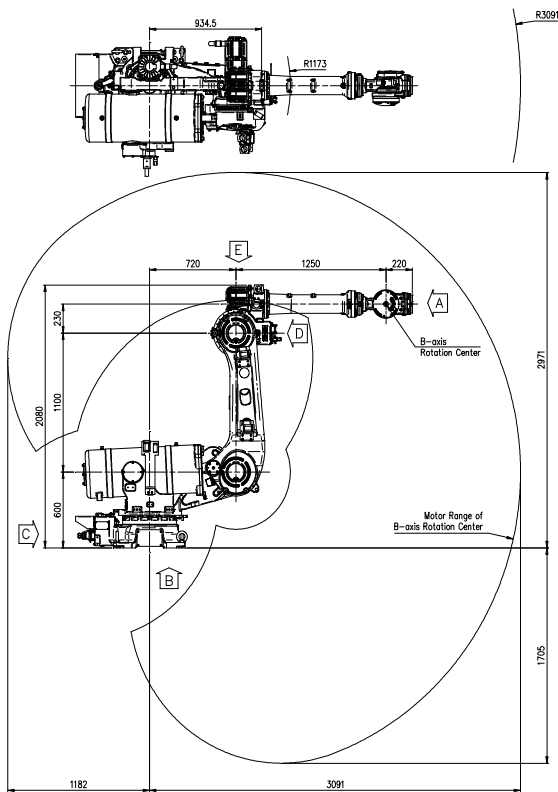


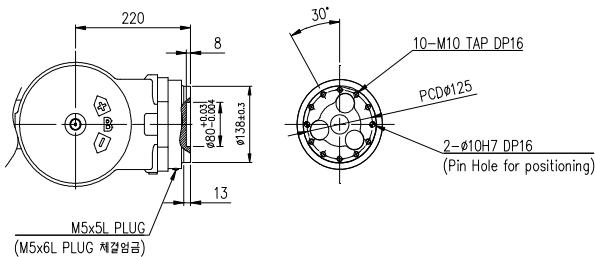
HS220S

Payload 220Kgf

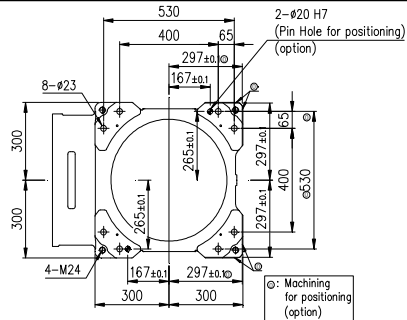
Installation method		Application	
Floor	●	Spot welding	●
Ceiling		Arc welding	
Wall surface		Handling	●
		Assembly	
		Sealing	●
		Painting	



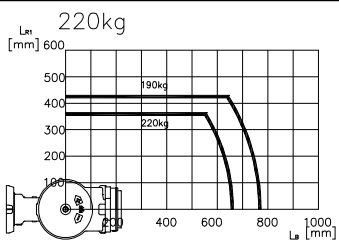
View A: Detailed drawing of the wrist attachment part



View B: Dimensional drawing for the floor installation of the



Wrist-axis torque line diagram

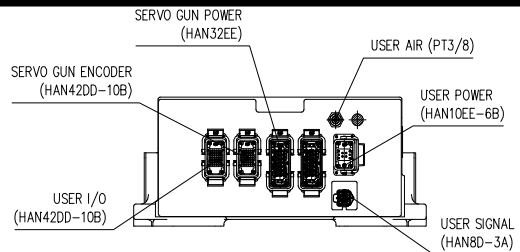


** For product improvement, some of the ratings, specifications, dimensions, etc. are subject to changes without notice.

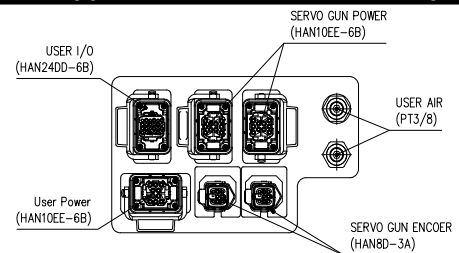
Item	Specification	
Robot model	HS220S	
Payload	220 Kg	
Structure	Articulated	
Degree of freedom	6 axes	
Max. working envelope	A Swivel	± 3.142 rad ($\pm 180^\circ$)
	H Horizontal	$+2.182 \sim -1.222$ rad ($+125^\circ \sim -70^\circ$)
	V Vertical	$+3.316 \sim -1.396$ rad ($+190^\circ \sim -80^\circ$)
	R2 Rotation 2	± 6.284 rad ($\pm 360^\circ$)
	B Bending	± 2.234 rad ($\pm 128^\circ$)
Max. working speed	R1 Rotation 1	± 6.284 rad ($\pm 360^\circ$)
	A Swivel	1.919 rad/s (110° /s)
	H Horizontal	1.641 rad/s (94° /s)
	V Vertical	1.919 rad/s (110° /s)
	R2 Rotation 2	2.531 rad/s (145° /s)
Wrist torque	B Bending	2.531 rad/s (145° /s)
	R1 Rotation 1	3.840 rad/s (220° /s)
	R2 Rotation 2	1422 N·m (145 kgf·m)
Accuracy of position repeatability	B Bending	1422 N·m (145 kgf·m)
	R1 Rotation 1	770 N·m (79 Kgf·m)
Ambient Temperature	$0 \sim 45^\circ\text{C}$ ($273 \sim 318\text{K}$)	
Robot's Weight	1,397 kg	

*) When the optional limit switch is attached, the action range of the main axis will be limited (see the manual)

View C: Application cable connection part



View D: Application cable connection part



View E: Details of the application ancillary part attachment

