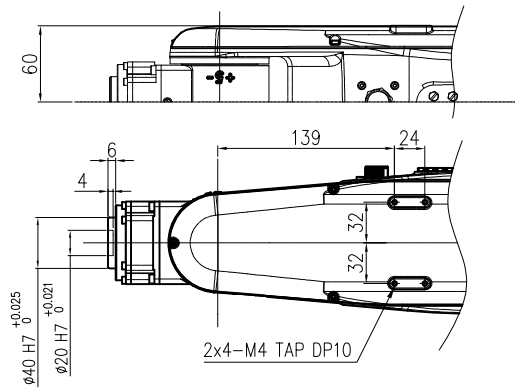
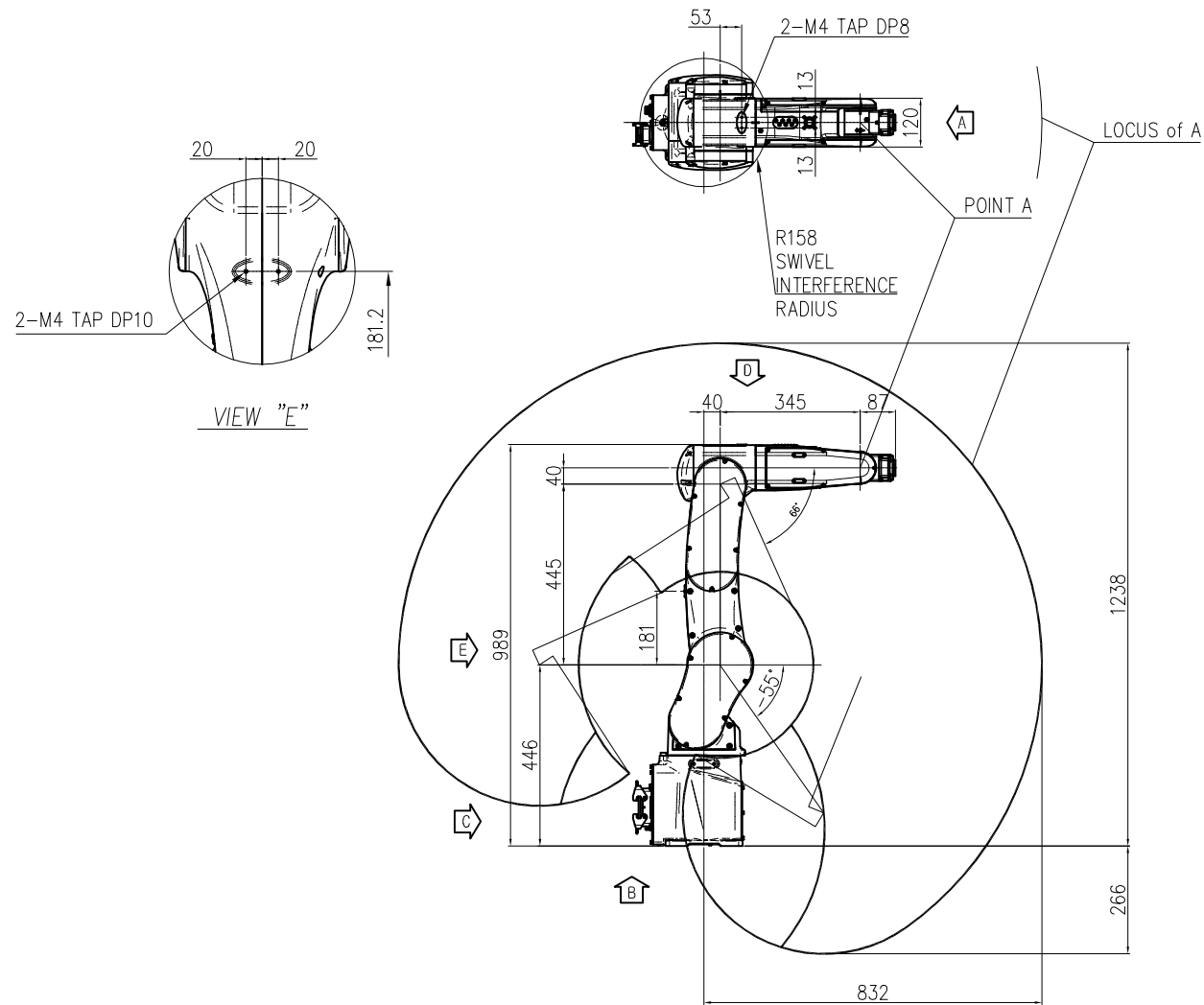


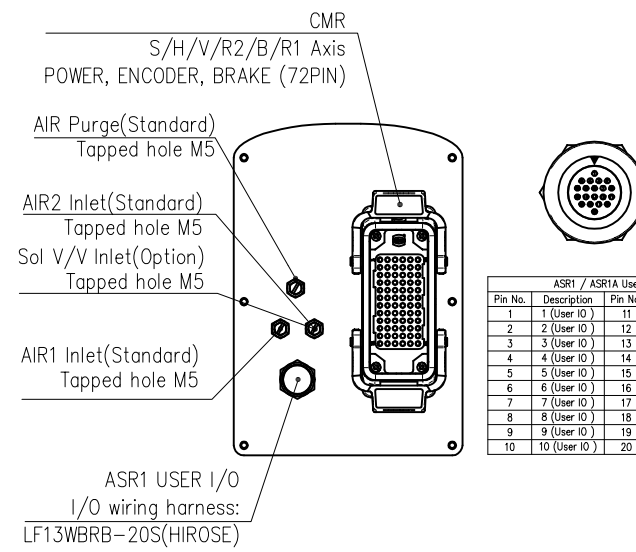
VIEW "A"



VIEW "F"

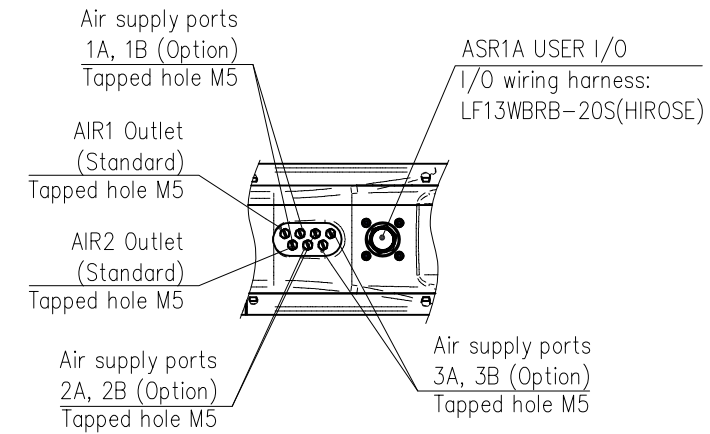


VIEW "E"

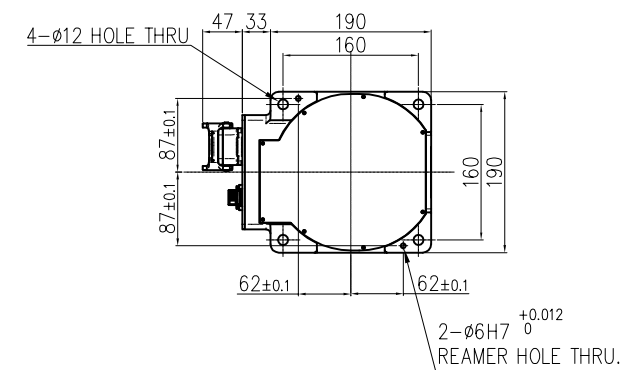


ASR1 / ASR1A User I/O Wiring Harness				
Pin No.	Description	Pin No.	Description	Option
1	1 (User ID)	11	11 (User ID)	
2	2 (User ID)	12	12 (User ID)	1A(sol v/v)
3	3 (User ID)	13	13 (User ID)	1B(sol v/v)
4	4 (User ID)	14	14 (User ID)	2A(sol v/v)
5	5 (User ID)	15	15 (User ID)	2B(sol v/v)
6	6 (User ID)	16	16 (User ID)	3A(sol v/v)
7	7 (User ID)	17	17 (User ID)	3B(sol v/v)
8	8 (User ID)	18	18 (User ID)	G(sol v/v)
9	9 (User ID)	19		
10	10 (User ID)	20		

VIEW "C"



VIEW "D"



VIEW "B"

TECHNICAL SPECIFICATION SUBJECT TO
 CHANGE WITHOUT NOTICE

MODEL	HH8	issue.0
DATE	2020.03.11	