

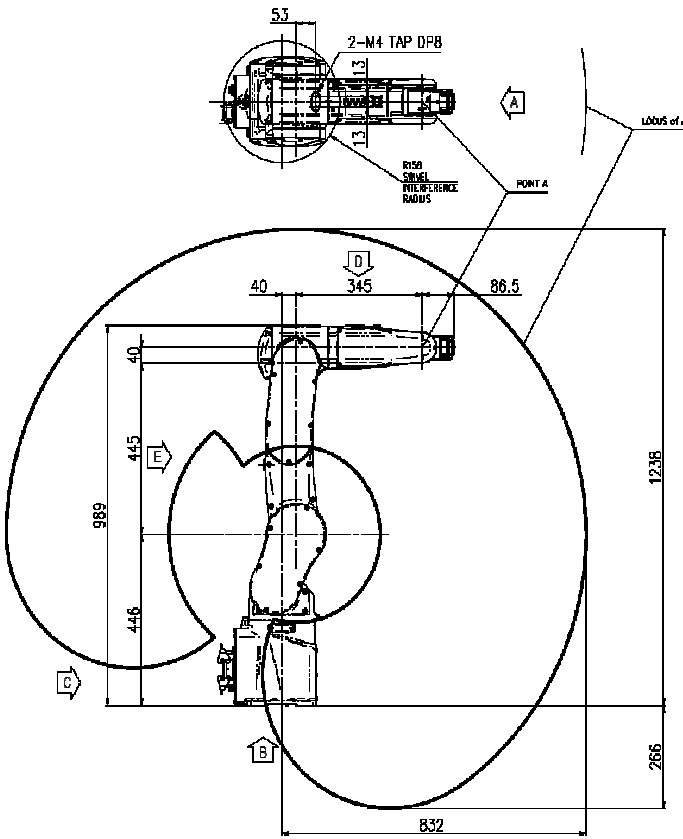
HH7

Installation method		Application	
Floor	●	Spot welding	
Ceiling	●	Arc welding	
Wall surface	●	Handling	●
		Assembly	●
		Sealing	●
		Painting	

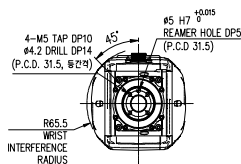
Item	Specification
Robot model	HH7
Payload	7 Kg
Structure	Articulated
Degree of freedom	6 axes
Drive system	AC SERVO MOTOR
Max. working envelope	A S Swivel ± 2.967 rad ($\pm 170^\circ$)
	H Horizontal 55°
	V Vertical 70°
	R2 Rotation 2 ± 3.316 rad ($\pm 190^\circ$)
	B Bending ± 2.356 rad ($\pm 135^\circ$)
Max. working speed	R1 Rotation 1 ± 6.283 rad ($\pm 360^\circ$)
	A S Swivel 6.544 rad / s (455° / s)
	H Horizontal 5.497 rad / s (385° / s)
	V Vertical 7.155 rad / s (520° / s)
	R2 Rotation 2 9.599 rad / s (550° / s)
Wrist torque	B Bending 17 N.m (1.73 Kgf.m)
	R1 Rotation 1 17.453 rad / s (1000° / s)
	R2 Rotation 2 10 N.m (1.02 Kgf.m)
Accuracy of position repeatability	± 0.03 mm
Ambient Temperature	0 ~ 45 °C (273 ~ 313 K)
Robot's Weight	42 Kg
Working envelope section area	1.98 m ²

*) When the optional limit switch is attached, the action range of the main axis

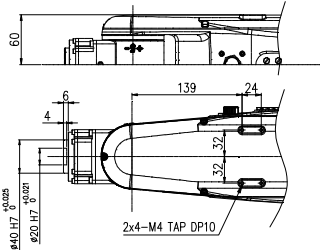
will be limited (see the manual)



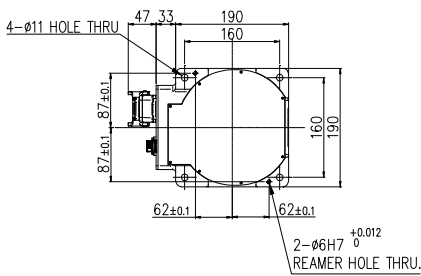
View A: Detailed drawing of the wrist attachment



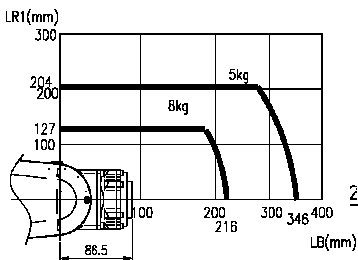
View B: Dimensional drawing for the floor installation of the body



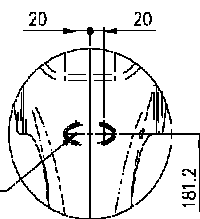
View G: Application part mounting



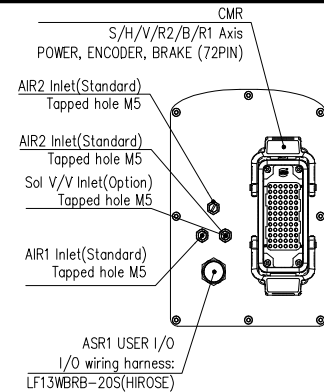
View E: Application part mounting



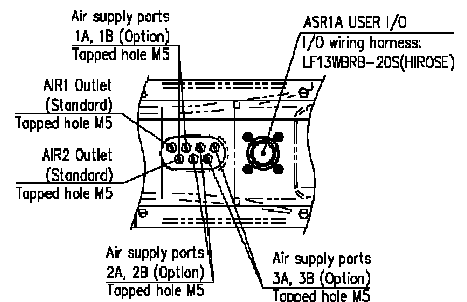
Wrist-axis torque line diagram



View C: Application cable connection part



View D: Application cable connection part



** For product improvement, some of the ratings, specifications, dimensions, etc. are subject to changes without notice