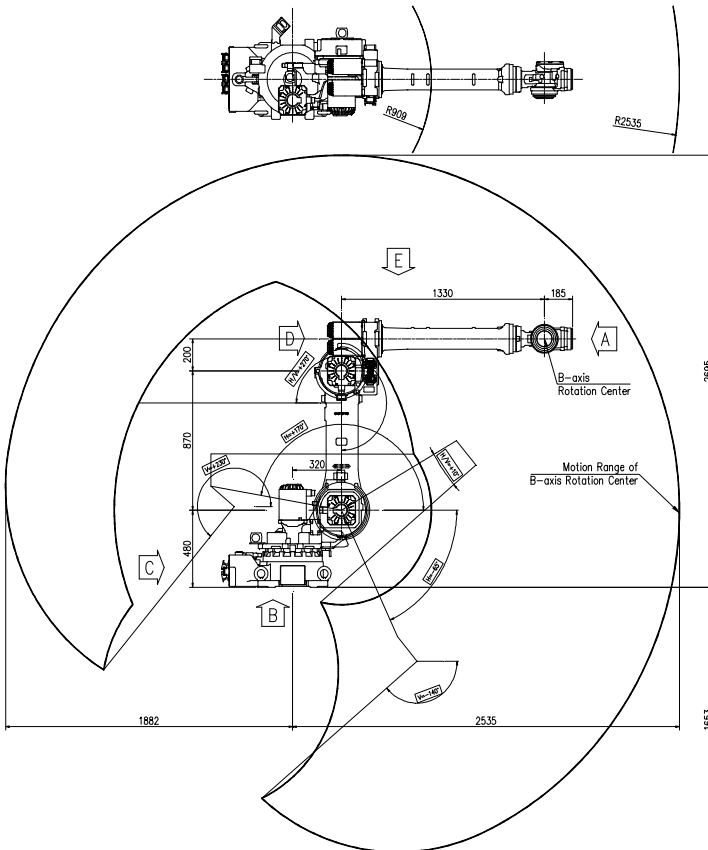


# HH030L

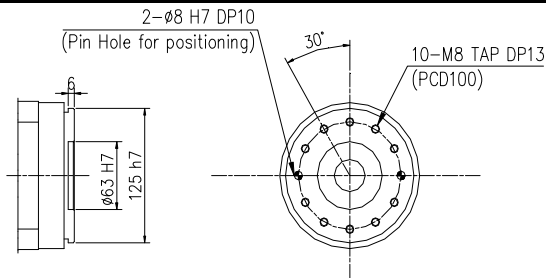
**Payload 30Kgf**

Installation method		Application	
Floor	●	Spot welding	
Ceiling		Arc welding	
Wall surface		Handling	●
		Assembly	●
		Sealing	●
		Painting	

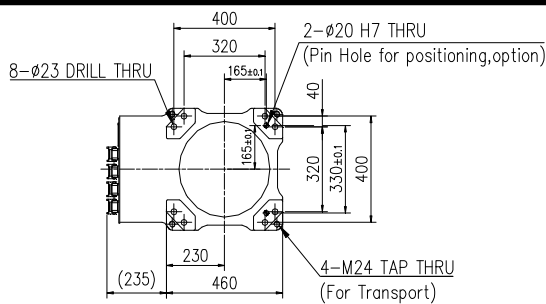


Item		Specification	
Robot model		HH030L	
Payload		30 Kg	
Structure		Articulated	
Degree of freedom		6 axes	
Max. working envelope	Arm	S Swivel	±3.141 rad (±180°)
		H Horizontal	-1.134rad ~ +2.967 (-65° ~ +170°)
		V Vertical	3.141rad ~ -1.396 (180° ~ -80°)
	Wrist	R2 Rotation 2	±6.283 rad (±360°)
		B Bending	±2.182 rad (±125°)
		R1 Rotation 1	±6.283 rad (±360°)
Max. working speed	Arm	S Swivel	2.618 rad / s (150° / s)
		H Horizontal	2.443 rad / s (140° / s)
		V Vertical	2.618 rad / s (150° / s)
	Wrist	R2 Rotation 2	4.363 rad / s (250° / s)
		B Bending	4.363 rad / s (250° / s)
		R1 Rotation 1	6.109 rad / s (350° / s)
Wrist torque	R2 Rotation 2	200 Nm (20.4 Kgfm)	
	B Bending	200 Nm (20.4 Kgfm)	
	R1 Rotation 1	100 Nm (10.2 Kgfm)	
Accuracy of position repeatability		±0.1 mm	
Ambient Temperature		0 ~ 45 °C (273 ~ 318 K)	
Robot's Weight		650 Kg	

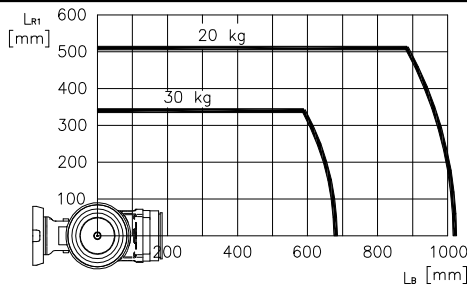
**View A: Detailed drawing of the wrist attachment part**



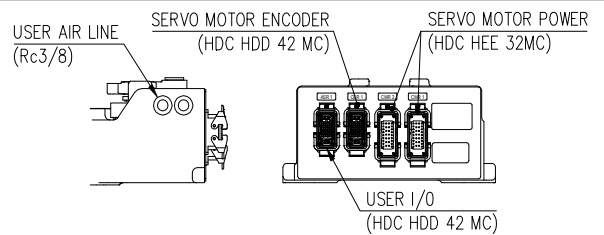
**View B: Dimensional drawing for the floor installation of the body**



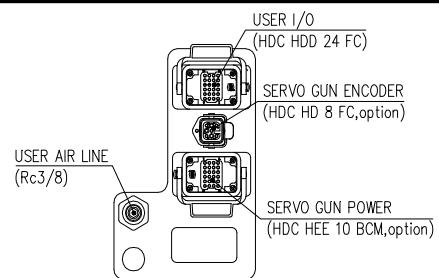
**Wrist-axis torque line diagram**



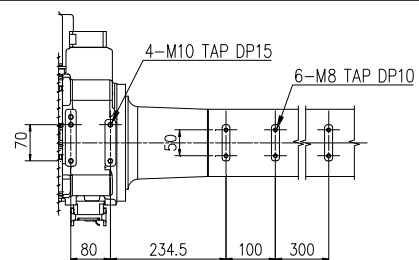
**View C: Application cable connection part (Option)**



**View D: Application cable connection part (Option)**



**View E: Details of the application ancillary part attachment**



\*\* For product improvement, some of the ratings, specifications, dimensions, etc. are subject to changes without notice.